

CDM

50Hz

CDMF

Light Vertical Multistage Centrifugal Pump

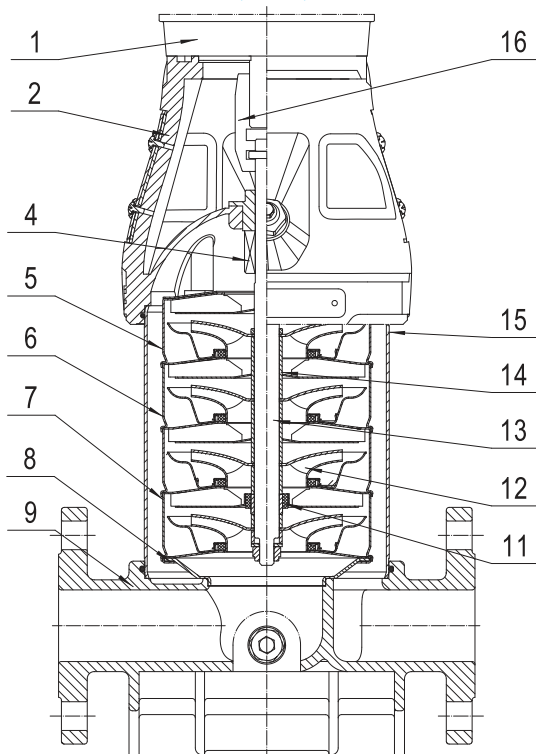


Stock code:300145

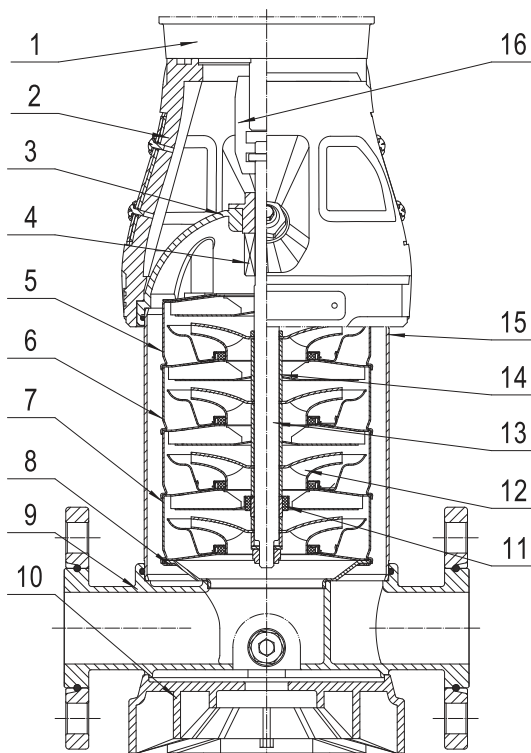
Pumping Water Pumping Honor



CDM/CDMF 10,15,20 Sectional drawing



CDM



CDMF

CDM 10,15,20 Material list

Pos.	Name	Material	AISI/ASTM
1	Motor		
2	Pump head	Cast iron	ASTM25B
4	Mechanical seal	Tungsten carbide/ Carbon	
5	Top diffuser	Stainless steel	AISI304
6	Diffuser	Stainless steel	AISI304
7	Support diffuser	Stainless steel	AISI304
8	Inducer	Stainless steel	AISI304
9	Inlet & outlet chamber	Cast iron	ASTM25B
11	Bearing	Tungsten carbide	
12	Impeller	Stainless steel	AISI304
13	Shaft	Stainless steel	AISI304
14	Impeller sleeve	Stainless steel	AISI304
15	Cylinder	Stainless steel	AISI304
16	Coupling	Carbon steel/ Powder metallurgy	

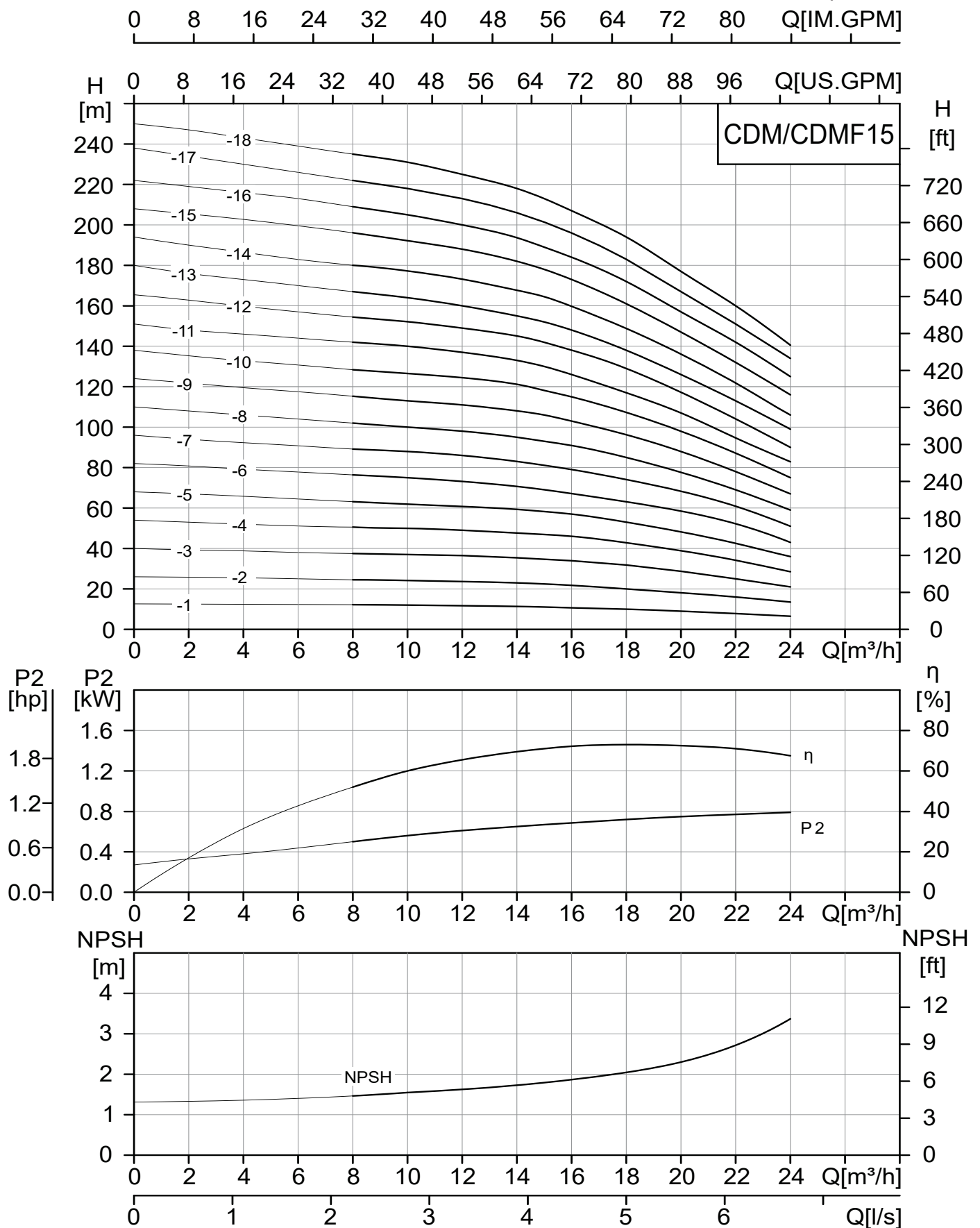
Please check with us for other materials.

CDMF 10,15,20 Material list

Pos.	Name	Material	AISI/ASTM
1	Motor		
2	Pump head	Cast iron	ASTM25B
3	Lining	Stainless steel	AISI304
4	Mechanical seal	Tungsten carbide/ Carbon	
5	Top diffuser	Stainless steel	AISI304
6	Diffuser	Stainless steel	AISI304
7	Support diffuser	Stainless steel	AISI304
8	Inducer	Stainless steel	AISI304
9	Inlet & outlet chamber	Stainless steel	AISI304
10	Base plate	Cast aluminum	
11	Bearing	Tungsten carbide	
12	Impeller	Stainless steel	AISI304
13	Shaft	Stainless steel	AISI304
14	Impeller sleeve	Stainless steel	AISI304
15	Cylinder	Stainless steel	AISI304
16	Coupling	Carbon steel/ Powder metallurgy	

CDM/CDMF 15 Performance curve

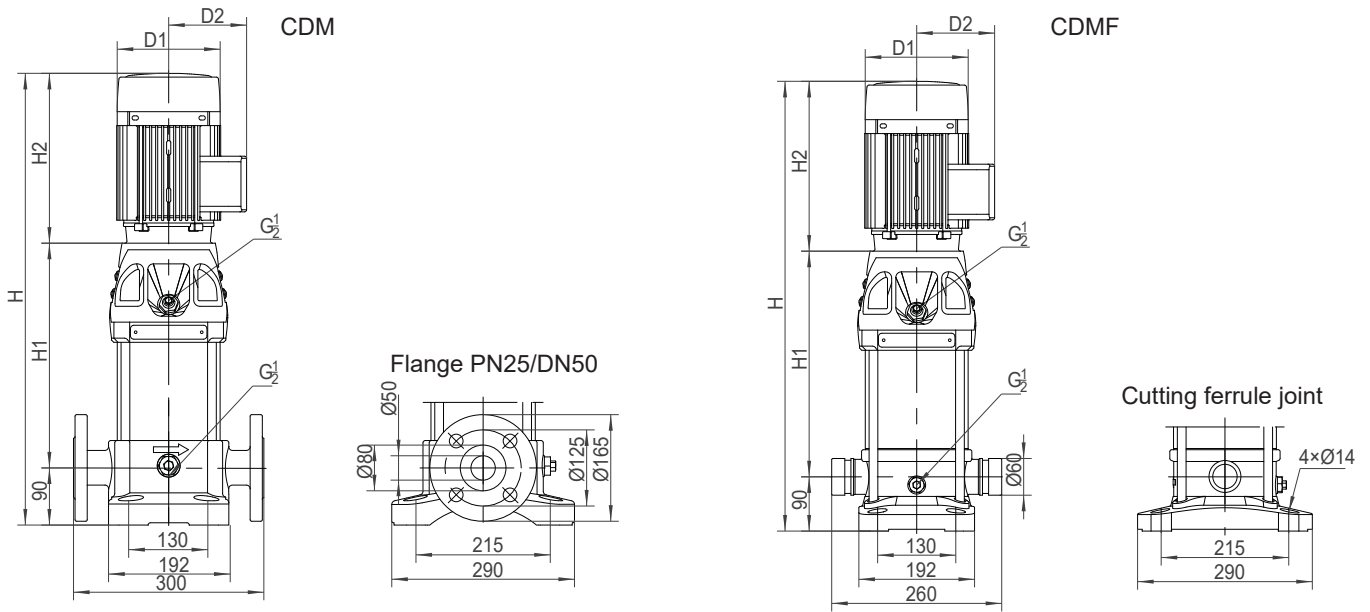
2900rpm



CDM/CDMF 15 Performance table

Model	Motor		Q (m ³ /h)	0	8	10	12	14	15	16	18	20	22	24
	(kW)	(hp)												
15-1	1.1	1.5	H (m)	12.6	12.2	12	11.8	11.5	11	10.5	10	9	8	6.5
15-2	2.2	3		26	24.5	24	23.5	23	22.5	21.5	20	18	16	13.5
15-3	3	4		40	37.5	37	36.5	35.5	34.5	34	32	29	25	21
15-4	4	5.5		54	50.5	50	49	47.5	47	46	43	39	34	28.5
15-5	4	5.5		68	63	62	61	59	58	57	53	48	42.5	36
15-6	5.5	7.5		82	76	75	73	71	69	67	63	58	52	43
15-7	5.5	7.5		96	89	88	86	83	81	79	74	68	61	51
15-8	7.5	10		110	102	100	98	95	93	91	85	78	69	59
15-9	7.5	10		124	115	113	111	108	106	103	96	88	78	67
15-10	11	15		138	128	126	124	121	118	115	107	98	87	75
15-11	11	15		151	142	140	137	133	130	126	117	107	95	83
15-12	11	15		166	154	152	149	145	142	138	129	117	104	90
15-13	11	15		180	167	164	160	155	152	148	138	126	113	99
15-14	11	15		194	180	177	173	168	165	160	149	136	122	106
15-15	15	20		208	196	192	188	182	178	173	161	147	132	116
15-16	15	20		222	209	205	200	194	189	184	172	157	142	125
15-17	15	20		236	222	218	213	206	201	196	183	167	151	132
15-18	15	20		250	235	231	225	218	213	207	194	177	160	141

CDM/CDMF 15 Installation sketch



The overall dimensions of the single-phase motor and explosive-proof motor are a little different. Please contact us for details.

Dimensions and weights

Model	Dimension (mm)					Weight(kg)	
	H1	H2	H	D1	D2	CDM	CDMF
15-1	297	245	632	170	142	40	33
15-2	307	290	687	190	155	48	41
15-3	362	345	797	197	165	59	52
15-4	407	355	852	230	188	66	59
15-5	452	355	897	230	188	68	61
15-6	575	390	1055	260	208	90	83
15-7	620	390	1100	260	208	91	84
15-8	665	390	1145	260	208	98	91
15-9	710	390	1190	260	208	99	92
15-10	785	500	175	330	255	157	150
15-11	830	500	1420	330	255	159	152
15-12	875	500	1465	330	255	160	153
15-13	920	500	1510	330	255	162	155
15-14	965	500	1555	330	255	163	156
15-15	1010	500	1600	330	255	179	172
15-16	1055	500	1645	330	255	181	174
15-17	1100	500	1690	330	255	182	175
15-18	1145	500	1735	330	255	184	177

