

CDM

50Hz

CDMF

Light Vertical Multistage Centrifugal Pump

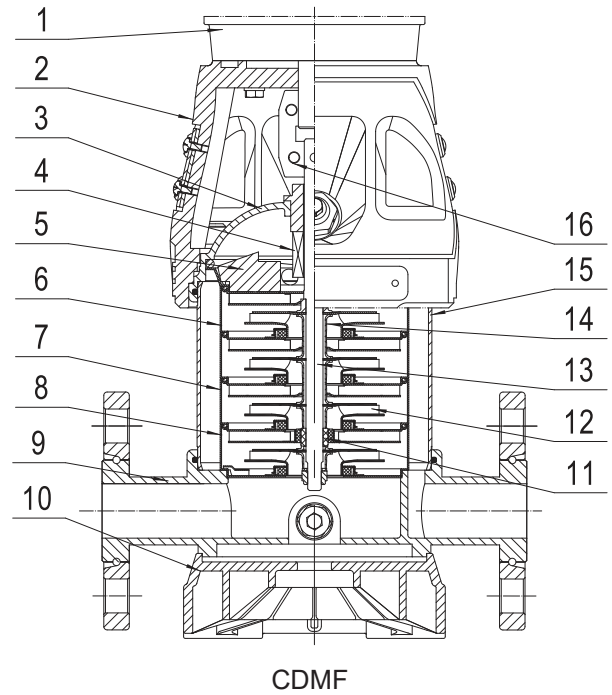
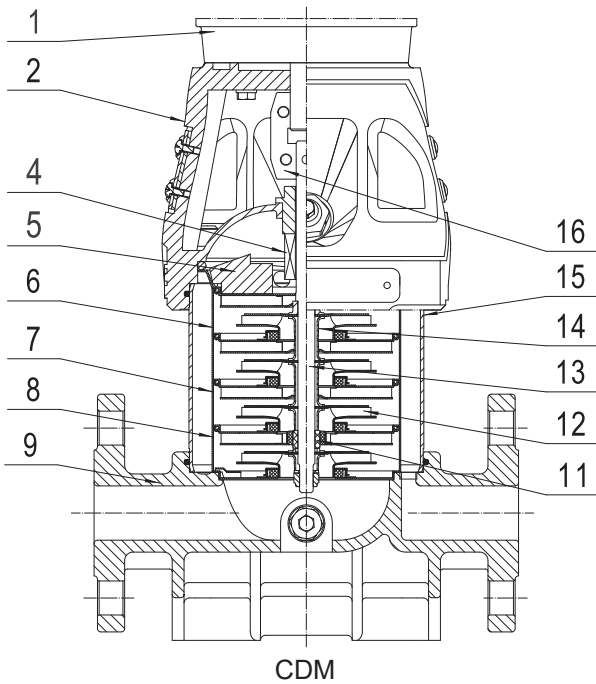


Stock code:300145

Pumping Water Pumping Honor



CDM/CDMF 1,3,5 Sectional drawing



CDM 1,3,5 Material list

Pos.	Name	Materials	AISI/ASTM
1	Motor		
2	Pump head	Cast iron	ASTM25B
4	Mechanical seal	Tungsten carbide /Carbon	
5	Top diffuser	Stainless steel	AISI304
6	Diffuser	Stainless steel	AISI304
7	Support diffuser	Stainless steel	AISI304
8	Inducer	Stainless steel	AISI304
9	Inlet & outlet chamber	Cast iron	ASTM25B
11	Bearing	Tungsten carbide	
12	Impeller	Stainless steel	AISI304
13	Shaft	Stainless steel	AISI304
14	Impeller sleeve	Stainless steel	AISI304
15	Cylinder	Stainless steel	AISI304
16	Coupling	Carbon steel/ Powder metallurgy	

Please check with us for other materials.

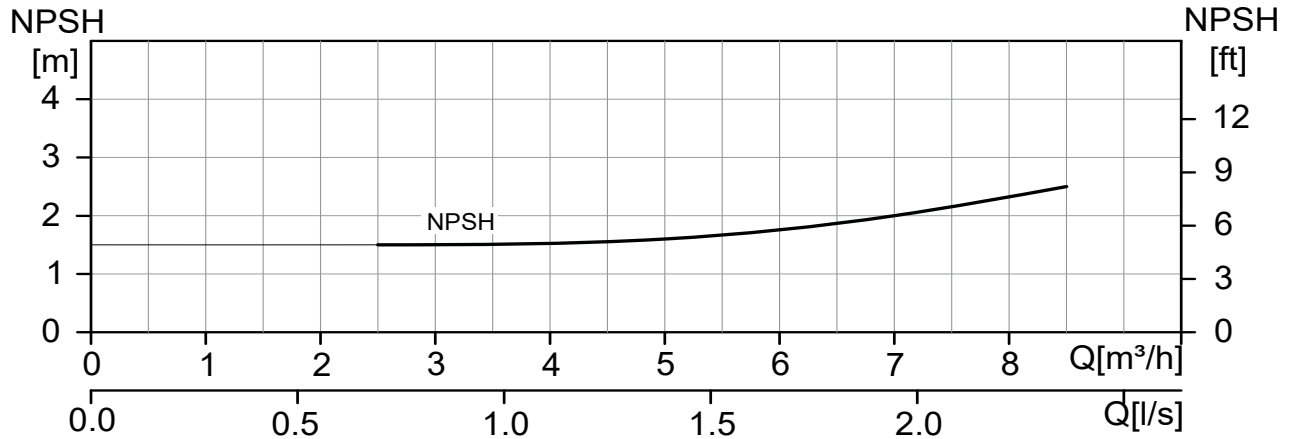
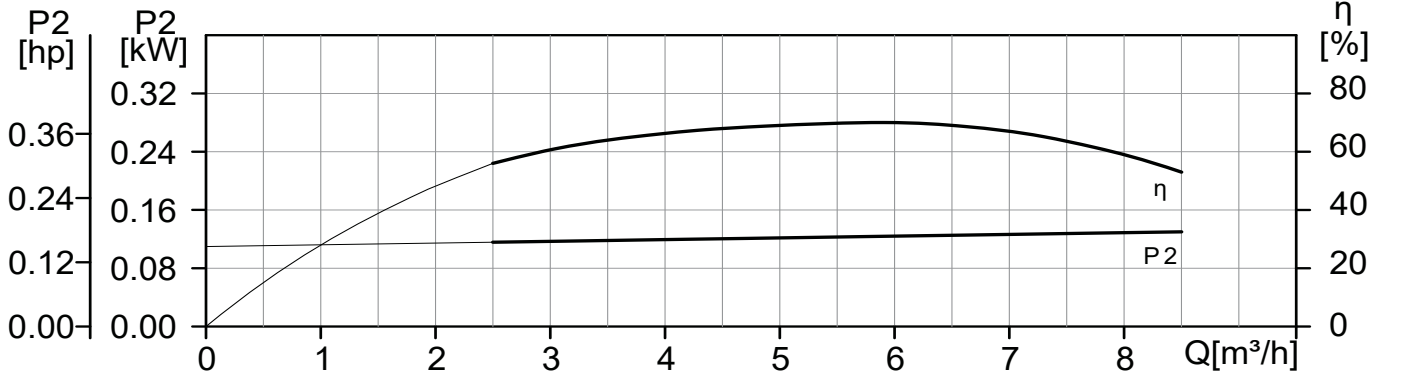
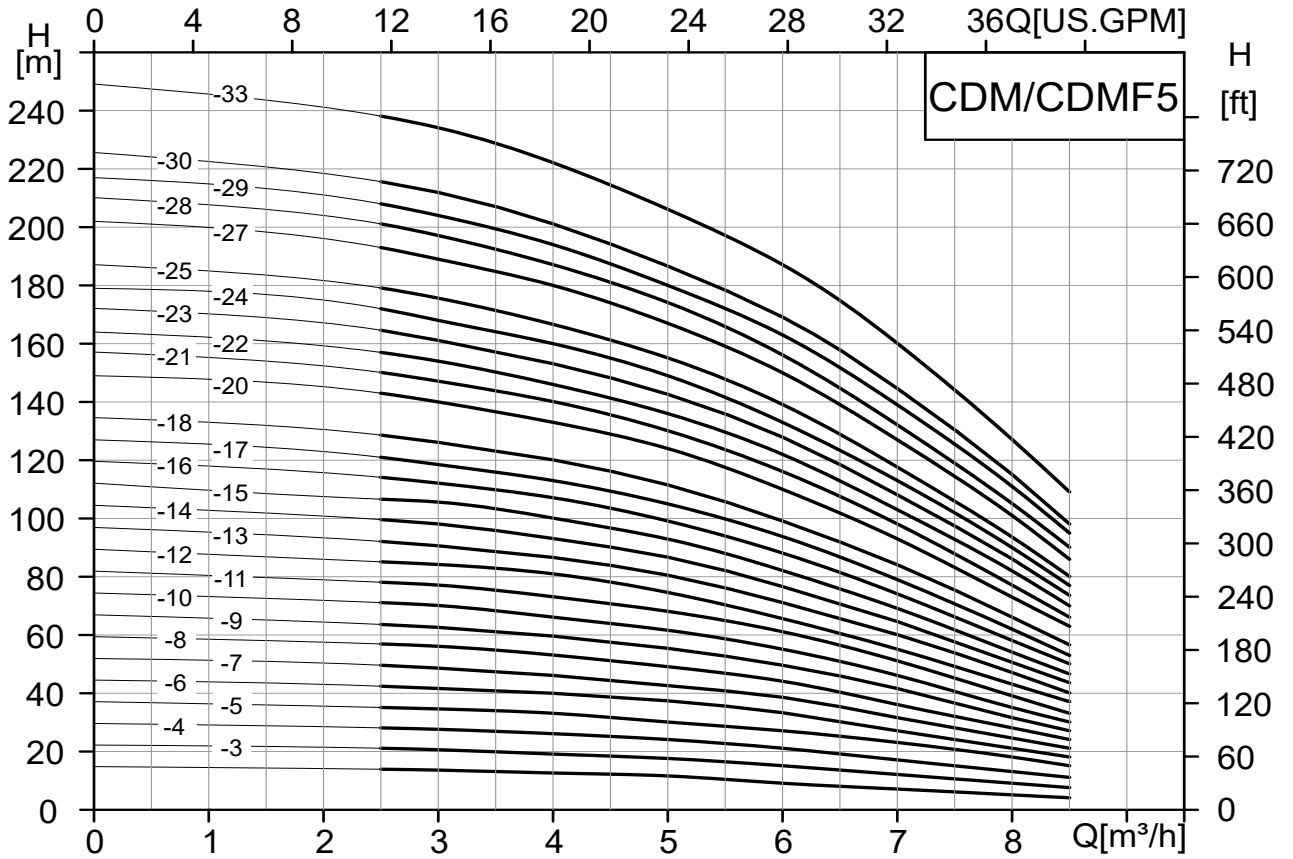
CDMF 1,3,5 Material list

Pos.	Name	Material	AISI/ASTM
1	Motor		
2	Pump head	Cast iron	ASTM25B
3	Lining	Stainless steel	AISI304
4	Mechanical seal	Tungsten carbide/ Carbon	
5	Top diffuser	Stainless steel	AISI304
6	Diffuser	Stainless steel	AISI304
7	Support diffuser	Stainless steel	AISI304
8	Inducer	Stainless steel	AISI304
9	Inlet & outlet chamber	Stainless steel	AISI304
10	Base plate	Cast aluminum	
11	Bearing	Tungsten carbide	
12	Impeller	Stainless steel	AISI304
13	Shaft	Stainless steel	AISI304
14	Impeller sleeve	Stainless steel	AISI304
15	Cylinder	Stainless steel	AISI304
16	Coupling	Carbon steel/ Powder metallurgy	

CDM/CDMF 5 Performance curve

2900rpm

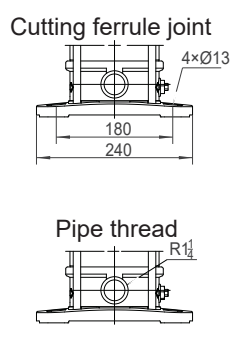
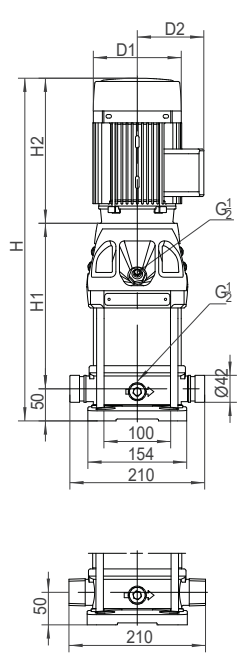
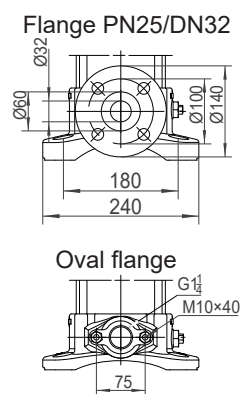
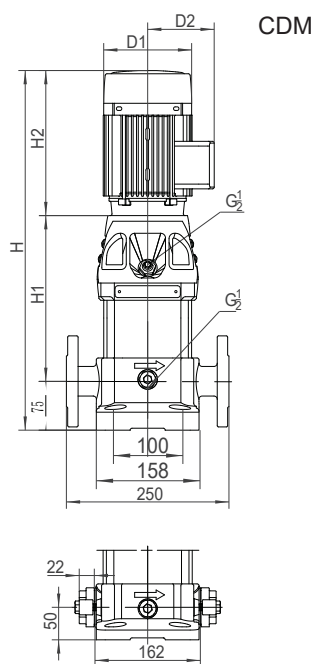
0 4 8 12 16 20 24 28 32 36 40 44Q[IM.GPM]



CDM/CDMF 5 Performance table

Model	Motor		Q (m ³ /h)	0	2.5	3	4	5	6	7	8	8.5
	(kW)	(hp)										
5-2	0.37	0.5	H (m)	14.7	13.5	13.3	12.5	11.5	9	7	5	4
5-3	0.55	0.75		22.1	21	20.5	19	17.5	15	12	9	7.5
5-4	0.55	0.75		29.5	28	27.5	26	24	21	17	13	11
5-5	0.75	1		37	35	34.5	33	30	27	23	18	15
5-6	1.1	1.5		44.5	42	41.5	40	37	33	27	21	18
5-7	1.1	1.5		52	49.5	48.5	46	42.5	38.5	31.5	24.5	21
5-8	1.1	1.5		59	57	56	53	49	44	36	28	24
5-9	1.5	2		67	64	63	60	55	49.5	41.5	31.5	27
5-10	1.5	2		74.5	71	70	66	62	55	46	35	30
5-11	1.5	2		82	78	77	73	68	61	51	39	33
5-12	2.2	3		89.5	85	84	81	74.5	66	55	43	37
5-13	2.2	3		97	92	91	87	80	71	60	47	40
5-14	2.2	3		104	100	98	93	87	77	65	51	43.5
5-15	2.2	3		112	107	106	100	93	82	69	54	46.5
5-16	2.2	3		119	114	112	107	99	88	74	58	50
5-17	3	4		127	121	118.5	113	105	94	79	62	53
5-18	3	4		134	128	126	120	111	99	84	66	56
5-20	3	4		149	143	140	133	124	110	93	73	63
5-21	3	4		157	150	147	140	130	116	98	77	66
5-22	4	5.5		164	157	154	146	136	122	103	82	70
5-23	4	5.5		172	165	161	153	142	128	108	86	74
5-24	4	5.5		179	172	168	160	149	133	113	90	77
5-25	4	5.5		187	179	175	167	155	139	117	93	80
5-27	4	5.5		202	193	189	180	168	150	127	101	86
5-28	4	5.5		210	201	197	187	174	156	132	105	90
5-29	5.5	7.5		217	208	204	194	180	163	139	111	95
5-30	5.5	7.5		225	216	212	201	186	169	144	115	98
5-33	5.5	7.5		249	238	234	222	206	187	160	127	109

CDM/CDMF 5 Installation sketch



Note1: CDM/CDMF5-21~5-33 have no oval flange pipeline connection.
 Note2: The overall dimensions of the single-phase motor and explosive-proof motor are a little different. Please contact us for details.

Dimensions and weights

Model	Dimension (mm)					Weight(kg)	
	H1	H2	H(Flange/Oth.)	D1	D2	CDM	CDMF
5-2	201	215	491/466	148	117	24	19
5-3	228	215	518/493	148	117	26	21
5-4	255	215	545/520	148	117	27	22
5-5	292	245	612/587	170	142	30	25
5-6	319	245	639/614	170	142	32	27
5-7	346	245	666/641	170	142	32	27
5-8	373	245	693/668	170	142	33	28
5-9	410	290	775/750	190	155	38	33
5-10	437	290	802/777	190	155	39	34
5-11	464	290	829/804	190	155	39	34
5-12	491	290	856/831	190	155	42	37
5-13	518	290	883/858	190	155	42	37
5-14	545	290	910/885	190	155	43	38
5-15	572	290	937/912	190	155	43	38
5-16	599	290	964/939	190	155	44	39
5-17	636	345	1056/1030	197	165	55	50
5-18	663	345	1083/1058	197	165	55	50
5-20	717	345	1137/1112	197	165	56	51
5-21	744	345	1164/1139	197	165	57	52
5-22	771	355	1201/1176	230	188	64	59
5-23	798	355	1228/1203	230	188	65	60
5-24	825	355	1255/1230	230	188	65	60
5-25	852	355	1282/1257	230	188	66	61
5-27	906	355	1336/1311	230	188	67	62
5-28	933	355	1363/1338	230	188	67	62
5-29	1035	390	1500/1475	260	208	87	82
5-30	1062	390	1527/1502	260	208	88	83
5-33	1143	390	1608/1583	260	208	89	84

